

Air Diving Spread (ADS)

TECHNICAL SPECIFICATIONS

NADI ADS 01 is designed to be a modular ADS for rapid deployment anywhere in the world. The containerized modules are designed according to ISO standards and are International Maritime Contractors Association (IMCA) compliant. These containerized modules can be laid out to fit the decks of any diving support vessels.

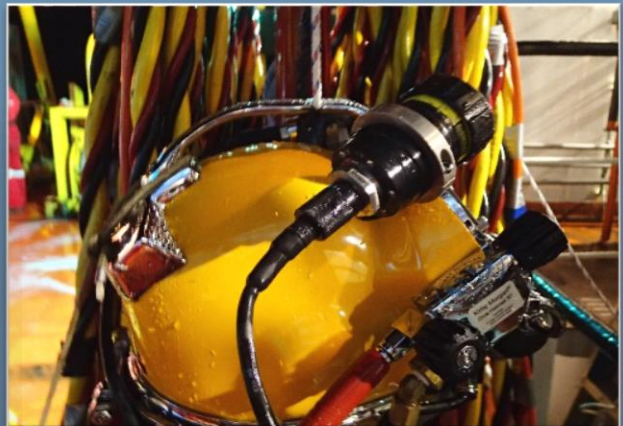
NADI ADS UTAMA comes complete with Divers' Equipment, Dive Control Station, Dive Control Master Panel, High Pressure (HP) & Low Pressure (LP) Compressors, Workshop, Twin Lock Deck Decompression Chamber (DDC) as well as Launch and Recovery System (LARS), where either wet bells or steel cages can be attached.



The LARS consist of a hydraulic 'A' frame deployable either on a vessel side or in front of a vessel's dedicated moon pool.

The Twin Lock Deck Decompression Chamber (DDC) comes in an air-conditioned 20' container.

Divers' equipment includes Kirby Morgan dive hats, umbilical cables, harnesses complete with emergency bail out bottles, communication system, video recording system and all other necessary diving and support equipment.



Air Diving Spread (ADS)

TECHNICAL SPECIFICATIONS

Class Society : PVHO, ASME VIII, AWS D1.1

Design Standard : IMCA D023

Testing/Certification Std : IMCA D018

Combined Dive Control & DDC Van

A 20 foot air-conditioned containerized container with lighting and power points, complete with Dive Control Station, dive control panel, CCTV, video recorders, divers communication, umbilical and 1516 OD DDC built to ASME SECT/ V111 DIV 1.2007ED ASME PVHO, 2007ED

- Overall Length : 3602mm
- Main Lock Length : 2540mm
- Diameter : 1516mm
- Weight (dry) : 2998kg
- Viewport Diameter : 232mm
- Medical Lock Strength : 450mm
- Medical Lock Diameter : 290mm
- Man Way Diameter : 774mm
- Working Pressure : 880kpa/ 128psi
- Test Pressure : 168psi
- 3-divers dive panel built to IMCA compliant guidelines supplied with 2 independent air / gases supplies
- 60" Twin Lock with PVHO "U" stamp DDC
- 2 x KMH Superlite 37 B with mounted CCTV system
- 1 x KMB 18 B band mask complete with hood and harness
- 3 x 200m each surface supplied diver umbilical cable

Machinery Van

An ISO 20 ft container with purposed built 4 corner recessed lighting point at 30 degrees angle complete with hydraulic power pack, air / gas cylinders, air bank, an LP compressor, a HP compressor, two exhaust fans

- 1 x HP Compressor – Electrically driven with 250cfm capacity
- 1 x LP Air Diving Compressor – Electrically driven with 250l/min capacity
- 1 x 32 kW HPU
- 12-Cylinder Air Bank

Skid-mounted Launching & Recovery System (LARS)

A skid mounted complete with a 2 tonne SWL A-Frame, a dive stage, clump weight, hydraulic winch and tool box) constructed to AISC specification.

- 2-divers basket complete with 2 x 47 liters emergency air supply cylinders
- Primary & secondary "RAM" ABS type approve man-riding winch
- 30 HP Hydraulic Power Unit
- Clump Weight

Component	Weight (Kg)	Dimension (mm)
Dive Control Van & DDC	800	6200L x 2500W x 2600H
LARS	4700	4650L x 2450W x 2400H
LARS HPP	500	1150L x 1150W x 2100H
HP Compressor	300	1300L x 600W x 800H
LP Compressor	1200	1650L x 1560W x 1560H
Air Manifold	20	600L x 300W x 600H
Store Container	5000	6200L x 2500W x 2600H

Nadi Marine products and services are subjected to the Company's standard terms and conditions, available on request. Visit us at www.nadimarine.com.my. For more information contact an authorized Nadi Marine representative. Unless otherwise, trademarks and service marks herein are the properties of Nadi Marine. Specifications are subject to change without notice.

©2014 Nadi Marine. All rights reserved.